

**CCS Technical Documentation  
NKC-1X Series Transceivers**

# **Troubleshooting Instructions**

## Table of Contents

	Page No
Transceiver Troubleshooting .....	4
Baseband Troubleshooting .....	4
General about testing.....	4
Troubleshooting .....	4
Power up faults.....	5
Flash Programming does not work.....	10
Charging .....	12
Audio failures.....	13
Accessory detection.....	15
Sleep Clock .....	16
Display/Keyboard lights do not work .....	18
Display does not work.....	19
Buzzer does not work.....	20
Keyboard does not work .....	20
Receiver Troubleshooting .....	21
General instructions for RX troubleshooting .....	21
Path of the received signal .....	21
Fault finding charts for receiver chain .....	21
Transmitter Troubleshooting .....	25
General instructions for TX troubleshooting .....	25
Path of the transmitted signall .....	25
Fault finding charts for the transmitter.....	25
Synthesizer Troubleshooting .....	29
19.44 MHz reference oscillator .....	29
RX VHF .....	31
TX VHF.....	32
UHF SYNTHESIZER.....	33

**List of Figures**

	<b>Page No</b>
Fig 1 Power up sequence .....	7
Fig 2 Fault tree, phone does not power up.....	9
Fig 3 Fault tree, charging .....	13
Fig 4 Fault tree, earpiece fail .....	14
Fig 5 Fault tree, microphone fail .....	15
Fig 6 Fault tree, accessory detection.....	16
Fig 7 Fault tree, sleep clock .....	17
Fig 8 Fault tree, Display/Keyboard lights.....	18
Fig 9 Fault tree, Display does not work.....	19
Fig 10 Fault tree. AMPS .....	22
Fig 11 Fault tree. Transmitter troubleshooting .....	26
Fig 12 Fault tree: Power control loop .....	28
Fig 13 Detected voltage levels .....	29
Fig 14 Fault tree: 19.44 MHz oscillator.....	30
Fig 15 Fault tree: RX VHF VCO .....	31
Fig 16 Fault tree: TX VHF VCO .....	32
Fig 17 Fault tree: UHF Synthesizer .....	33

## Transceiver Troubleshooting

The first thing to do when you are encountered with a problem is to carry out a thorough visual check of the module. Make sure that:

- there are no mechanical damages
- the solder joints are OK

*Note: Before changing anything, ALL SUPPLY VOLTAGES AND THE SYSTEM CLOCK / SLEEP CLOCK should be checked.*

## Baseband Troubleshooting

### General about testing

The phone has three different modes for testing and/or repairing the phone. The modes can be selected with suitable resistors connected to BSI- and BTEMP- lines as illustrated in the table below:

**Table 1: Phone operating mode**

Mode	BSI-resistor	BTEMP resistor	Remarks
Normal	68k	47k	
Local	560_ (<1k_)	Whatever	
Test	> 1k	560_ (<1k_)	Recommended for baseband testing. Same as local mode, but making a phone call is possible.

If the corresponding resistors are connected, the MCU software automatically enters into the local or test mode when the supply voltage is connected to the phone.

The power can be switched on by:

- 1 Pressing the power key.
- 2 Connecting the local/test mode resistors to the bsi/btemp lines and connecting the battery voltage to the phone.
- 3 Connecting a charger.
- 4 Phone's internal functions (Real time clock alarm)

In the local and test mode, the baseband can be controlled through MBUS or FBUS (FBUS is recommended) connections using Phoenix service software.

### Troubleshooting

*Note: Most of the baseband repair actions require removing the baseband shield. The shield must not be removed unless separately authorized by the program.*

*Note: The phone's ESN has to be re-written to the UEM, if the UEM is replaced. This can be done only in Central Service.*

The BB troubleshooting instructions consist of the following topics:

- 1 Power up
- 2 Flash programming
- 3 Audio
  - Earpiece
  - Microphone
- 4 Charging
- 5 Accessory detection
- 6 Sleep clock
- 7 User interface
  - Display
  - Lights
  - Buzzer
  - Keyboard

### **Power up faults**

#### *Power up sequence*

- 1 The UEM acts as a HW master during start up
  - Vbatt limits: 2.1V for internal state machine, 3V triggering whole startup
  - Regulator sequencing
    - HW "core" regulators "on": Vio, Vcore, VR3, Vflash1
    - These regulators supply the processors, memory, chip interfaces and clock source in RF
  - Reset releasing delay
    - Supply voltages stabilize to their UEM HW default values

- RFCLK grows to full swing
- The core is ready to run but waiting for the PURX release
- Reset releasing
  - The UPP releases the SLEEPX up to the "non sleep" -state to prevent the UEM switching the regulators "OFF"
- 2 MCU starts running the Bootstrap Code
  - written in stone/ UPP internal ROM
  - the program checks if there is any reason for the FDL mode (Flash Down Load)
  - If there is an executable code in FLASH and there is no reason for FDL, the MCU starts running the MCU program from FLASH.
- 3 MCU runs the FLASH MCU code
  - the phone initialization, user interfaces, internal blocks etc.
  - Core regulator voltage setting for required DSP speed
  - Initializes the DSP and concerning HW
  - Releases DSP reset -> DSP starts running

*Note: In figure below, the RF\_Clk frequency appears to be lower than 19.44MHz because of a too low oscilloscope sampling frequency (2kS/s).*

Figure 1: Power up sequence

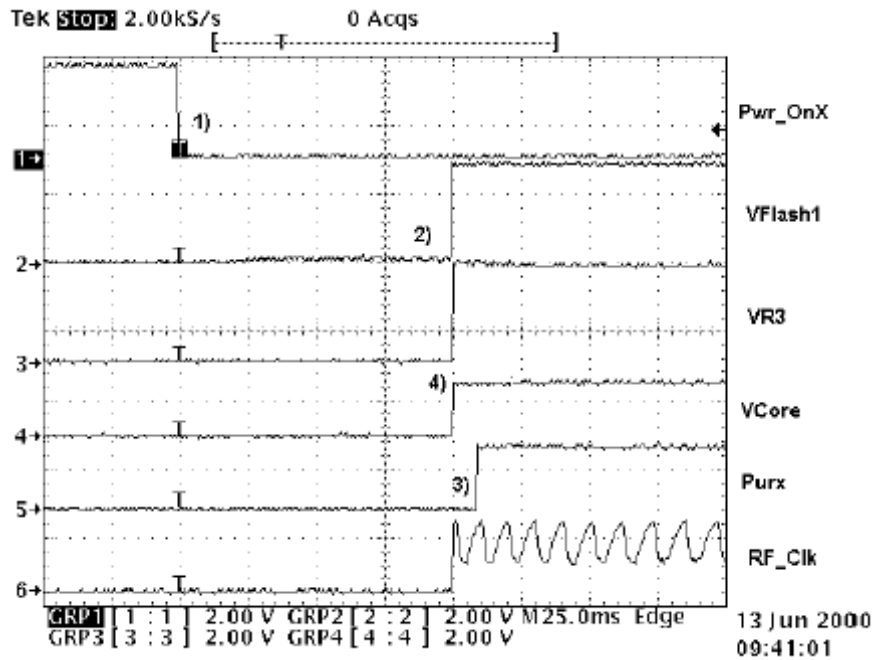


Figure 2: Power up sequence

- 1 Power key pressed
  - After 20ms UEM enters RESET MODE if VBAT>Vmstr+
  - VFLASH1, Vana, Vcore, Vio and VR3 goes high.
  - VCTCXO enabled by VR3 -> RFCIk 19.44 MHz running.
- 2 Purx released
  - Purx released by UEM, UEMINT goes high for 100 ms, SleepX goes high and UEM starts feeding SleepClk (32 KHz) to UPP.

*Note: The sleepclock starts running in the crystal circuitry (B200) immediately when the battery voltage is supplied.*

- 3 Software running
  - Default value for Vcore is 1.5 volts when the software is running.
  - Cbus (1.08MHz) clock starts running.

*Phone does not start up normally or does not stay on*

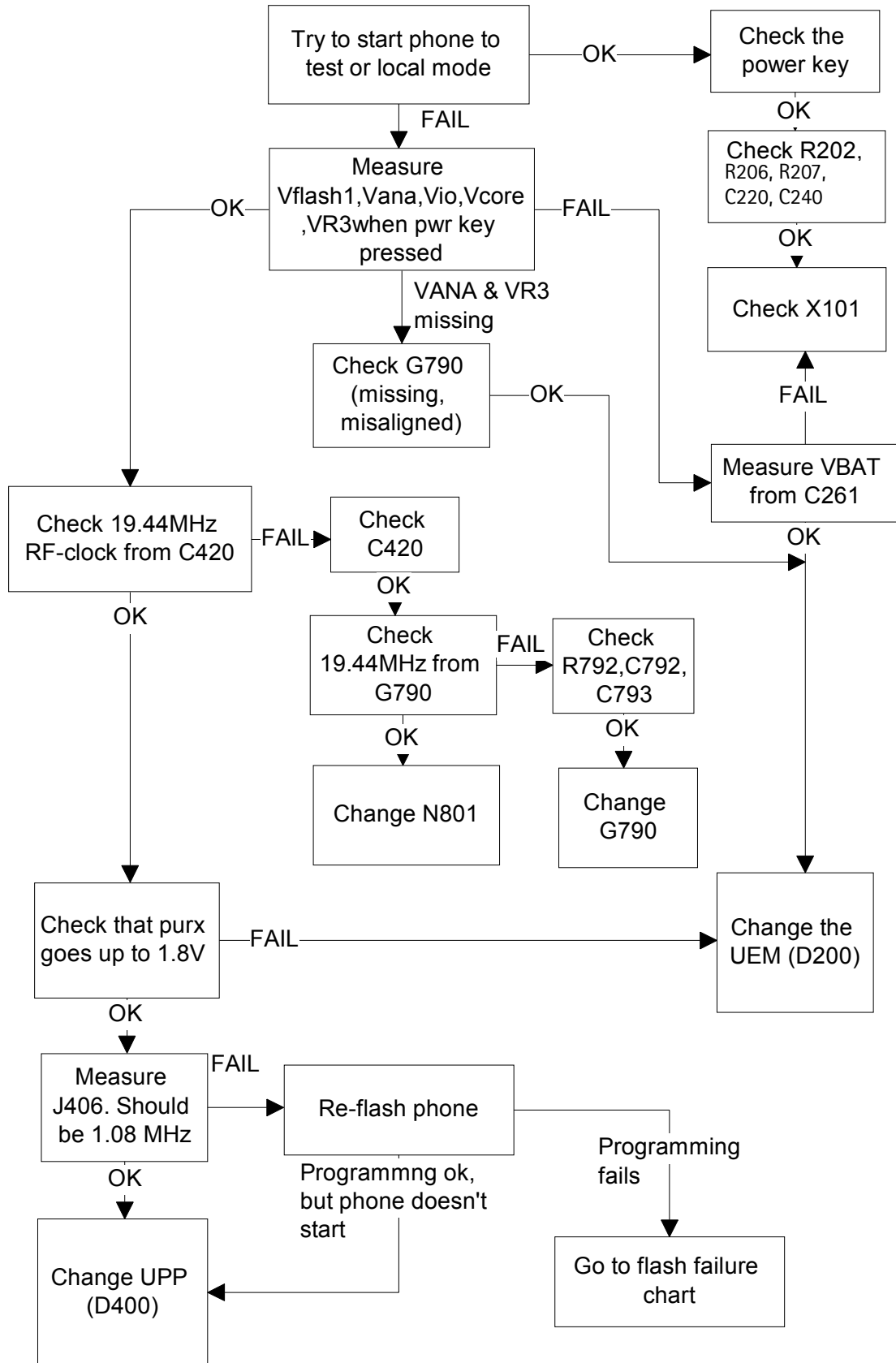
*Note: In case of power up faults, it is not possible to force the phone on by disabling the watchdog. Instead, measurements should be taken immediately when the power key is pressed or when the battery voltage is connected to the phone (local/test mode).*

The easiest way to check if the software is running when the phone takes an abnormal amount of current is to measure the *cbusclk* and *Vcore*.

The Dbus clock (programmable 9.72MHz) is not automatically visible in the test and local modes.



Figure 3: Fault tree, phone does not power up



## Flash Programming does not work

### *Flash programming procedure*

- 1 The phone communicates with the prommer via the production test pattern, using the following signals:
  - FBUSTX(serial data **to** phone)
  - FBUSRX(serial data **from** phone)
  - MBUS(serial clock for FBUSRX)
  - VPP(External flashing voltage for speed up flashing)
  - The BSI line is also used when initializing flashing (battery connector).
- 2 When the phone is powered ( $V_{BAT} > 3V$ ), the MBUS and FBUSTX lines are pulled up internally by the phone.
- 3 The prommer sends a command to the UEM, using FBUSRX, to enter the Flash-mode. During the sending of this command, the prommer keeps the BSI line high and MBUS is used as a serial clock.
- 4 When the Flash-mode command is acknowledged, **UEM** enters the Flash-mode and releases reset (PURX) to MCU.
- 5 After reset is released, UPP checks if there is a request for the Bootstrap code (that resides in the UPP ROM).
- 6 The request for Bootstrap is the MBUS pulled down by the prommer (if the bootstrap is not requested, the bootstrap code jumps to FLASH SW).
- 7 If the Bootstrap code is requested, **UPP** enters the Flash-mode and sets FbusTX to '0' as an acknowledgement to the prommer. This is an indication that UPP can run, at least, the fixed Bootstrap code – although it is not able to run the FLASH code. UPP then sends an UPP-ID to the prommer via the FBUSTX line.
- 8 After the prommer has received the UPP-ID, it sends a corresponding Secondary Boot Code to the phone via FBUSRX. The Secondary Boot Code, when run in UPP, requests UPP to send information to the prommer about the flash type and other HW-related parameters about the device to be flashed.
- 9 Prommer then sends the Algorithm Code corresponding to the HW parameters, and this algorithm, when run in UPP, takes over handling the MCUSW transfer to Flash.
- 10 12 volts can be supplied to Vpp (by the prommer) to speedup flashing.

- 11 The FLASH Program includes a package of MCU and DSP software and all default parameters for the phone. The tuning values will be added/rewritten during the Flash/Alignment phase.

*Flash programming error codes*

The various error codes can be seen from the "FPS-8 Flash" in Phoenix.

The underlined text in the table below means that the item under consideration is being used for the first time in the flashing sequence.

**Table 2: Table 2. Flash programming error codes.**

Error	Description	Not working properly
C101	"The Phone does not set FbusTx line high after the startup."	<u>Vbatt</u> <u>Vflash1</u> <u>Vcore</u> <u>VIO</u> <u>BSI and FbusRX from prommer to UEM.</u> <u>FbusTx from UPP-&gt;UEM-&gt;Prommer(SA0)</u>
C102	"The Phone does not set FbusTx line low after the line has been high. The Prommer generates this error also when the Phone is not connected to the Prommer."	<u>PURX(also to Safari)</u> <u>VR3</u> <u>Rfclock(VCTCXO-&gt;Safari-&gt;UPP)</u> <u>Mbus from Prommer-&gt;UEM-&gt;UPP(MbusRx)(SA1)</u> <u>FbusTx from UPP-&gt;UEM-&gt;Prommer(SA1)</u>
C103	"Boot serial line fail."	<u>Mbus from Prommer-&gt;UEM-&gt;UPP(MbusRx)(SA0)</u> <u>FbusRx from Prommer-&gt;UEM-&gt;UPP</u> <u>FbusTx from UPP-&gt;UEM-&gt;Prommer</u>
C104	"MCU ID message sending failed in the Phone."	<u>FbusTx from UPP-&gt;UEM-&gt;Prommer</u>
C105	"The Phone has not received Secondary boot codes length bytes correctly."	<u>Mbus from Prommer-&gt;UEM-&gt;UPP(MbusRx)</u> <u>FbusRx from Prommer-&gt;UEM-&gt;UPP</u> <u>FbusTx from UPP-&gt;UEM-&gt;Prommer</u>
C106	"The Phone has not received Secondary code bytes correctly."	<u>Mbus from Prommer-&gt;UEM-&gt;UPP(MbusRx)</u> <u>FbusRx from Prommer-&gt;UEM-&gt;UPP</u> <u>FbusTx from UPP-&gt;UEM-&gt;Prommer</u>
C107	"The Phone MCU can not start Secondary code correctly."	<u>UPP</u>
A204	"The flash manufacturer and device IDs in the existing Algorithm files do not match with the IDs received from the target phone."	<u>Flash</u> <u>Signals between UPP-Flash</u>
A387	"The MCU ID in the MCUSW."	<u>UPP</u>
C601	"The prommer has detected that Vpp voltage level has dropped below the limit"	<u>Vpp from prommer - &gt;Flash</u>

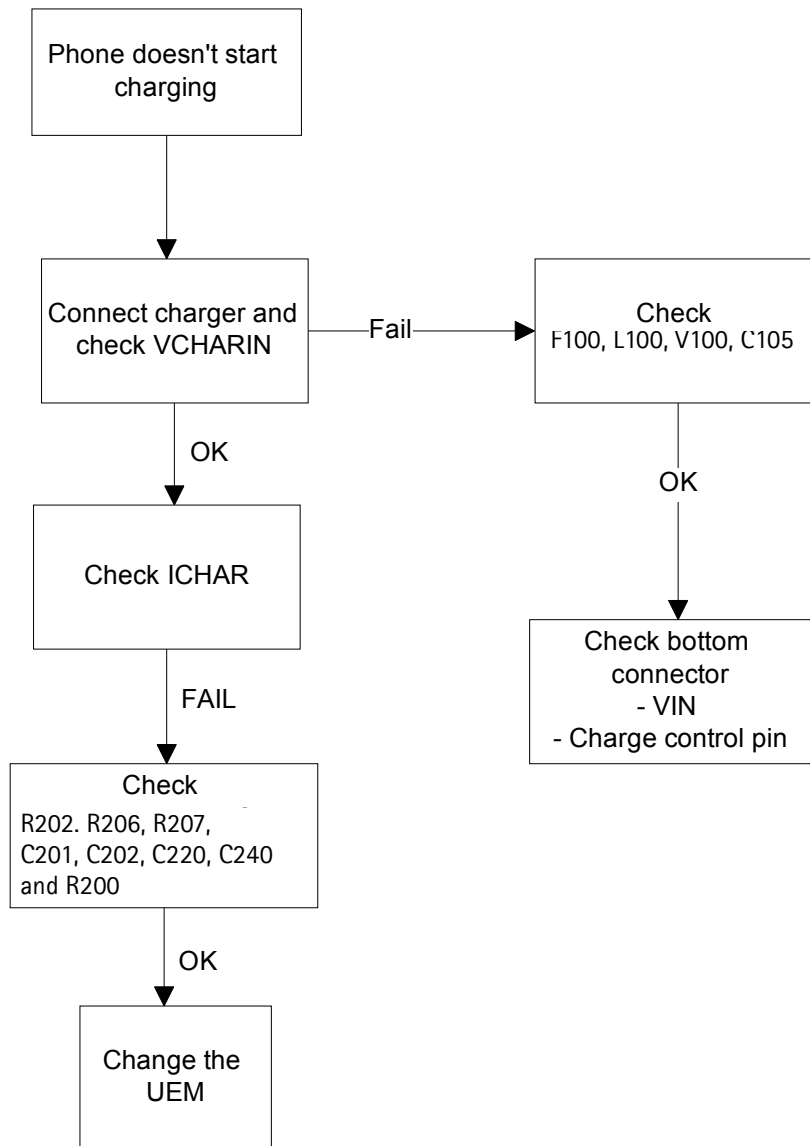
C383 C583 C683	"The Prommer has not received Phone acknowledge to the message." (C383-during algorithm download to target phone) (C583-during erasing) (C683-during programming)	Flash UPP Signals between UPP-Flash
C384 C584 C684	"The Phone has generated NAK signal during data block transfer." (C384-during algorithm download to target phone) (C584-during erasing) (C684-during programming)	Flash UPP Signals between UPP-Flash
C585 C685	Data block handling timeout" (C585-during erasing) (C685-during programming)	Flash UPP Signals between UPP-Flash
C586 C686	"The status response from the Phone informs about fail." (C586-during erasing) (C686-during programming)	Flash

### Charging

*Note: The charging voltage and current can be checked by connecting the phone to the service software and reading the ad- converter values of the vchar and ichar.*

If charging fails when the LCH-9 is used, and works with ACP-7 and ACP-8, check that the charge control pin of the system connector is connected to the ground.

Figure 4: Fault tree, charging



**Audio failures**

In case of audio failures, there are three possibilities to check the audio lines.

- 1 Make a phone call against tester and check audios.
- 2 In case the earpiece/XMIC fails: Feed a 1Khz signal to the XMIC line and measure the signal from the earpiece line. The Audio test box JBA-8 is needed. The Audio loop (*Audio test/Ext In Hp Out*) must be switched on by the Phoenix service software. This loop will connect audios only through the UEM. In this case, the UPP is not used.

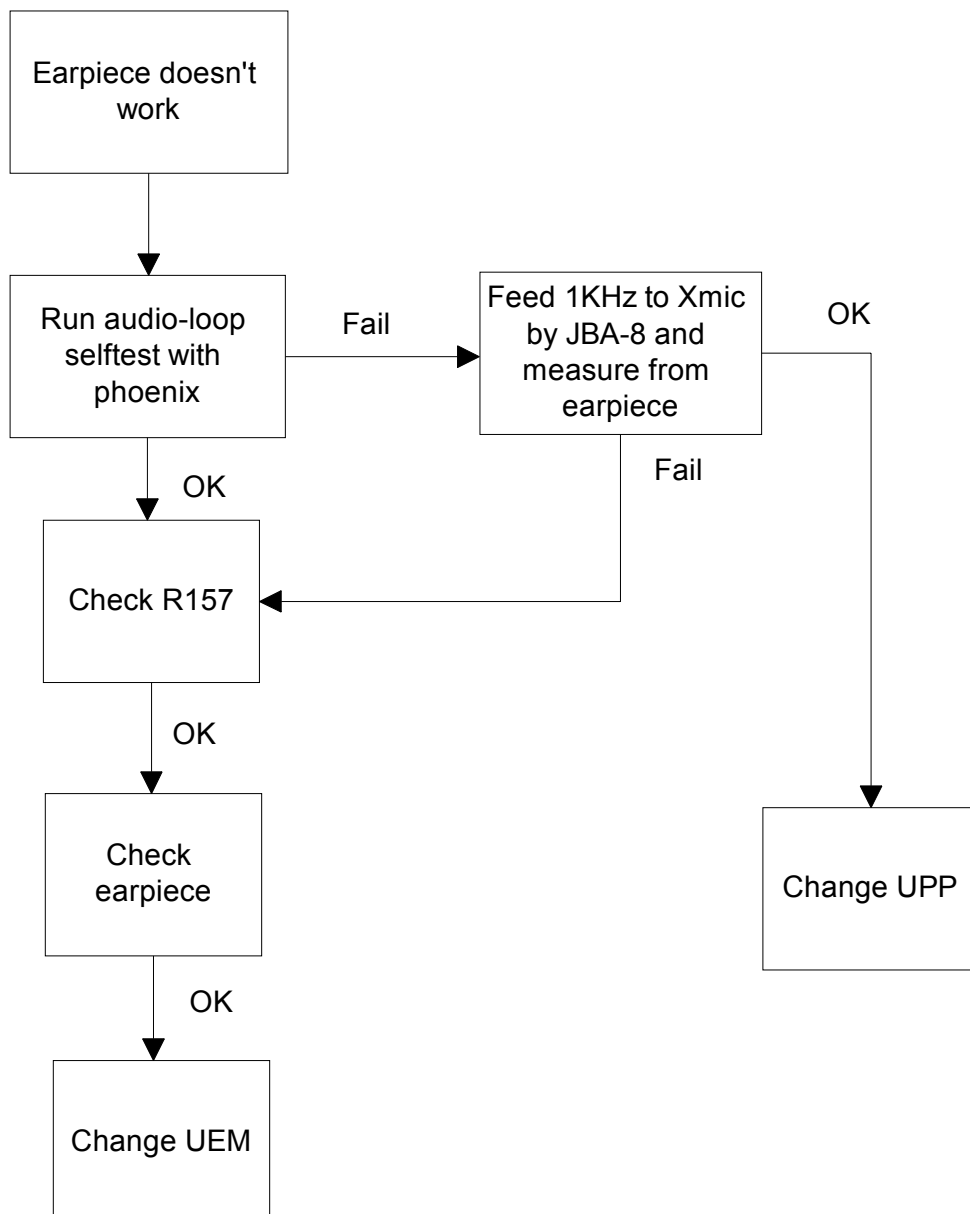
In case the internal microphone/XEAR fails: Feed the tone to the microphone and measure the signal from the XEAR line. The Audio test box JBA-8 is needed. The

Audio loop (*Audio test/Hp In Ext Out*) must be switched on by the Phoenix service software. This loop will connect audios only through the UEM. In this case, the UPP is not used.

- 3 Run the audio-loop self-test with Phoenix (*BB Self Tests/ST\_EAR\_DATA\_LOOP\_TEST*). This loop will test the ear-data/mic-data lines between the UPP and the UEM.

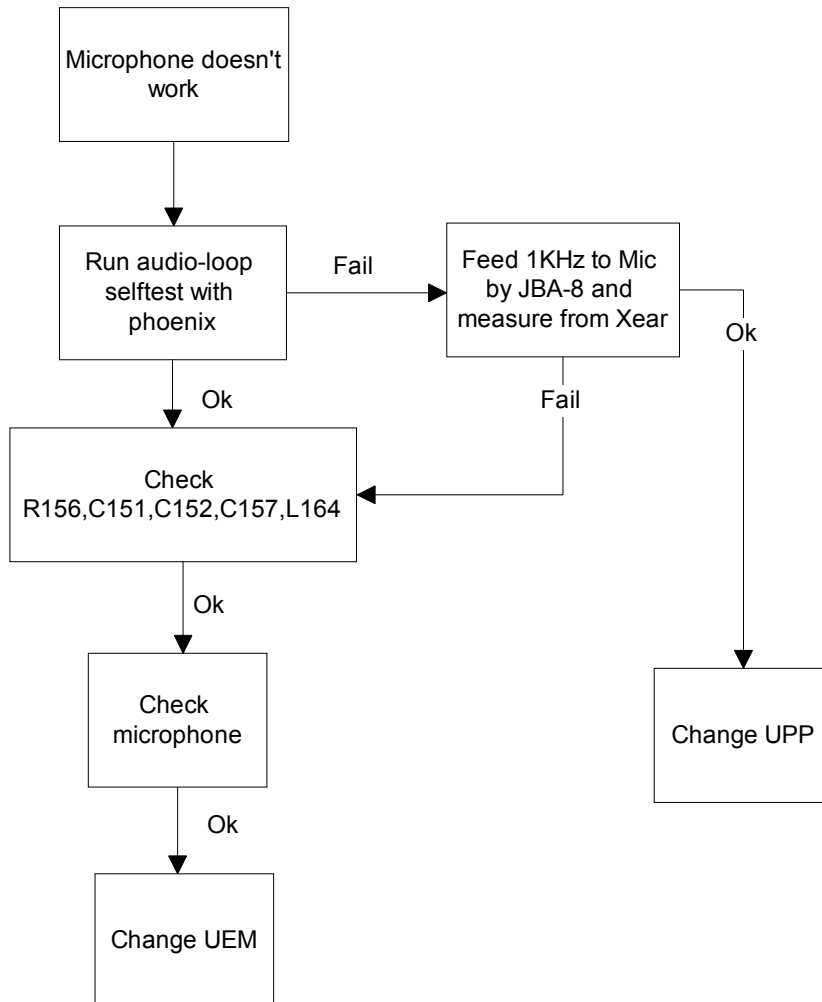
*Earpiece or external microphone line does not work*

Figure 5: Fault tree, earpiece fail



*Microphone or XEAR line does not work*

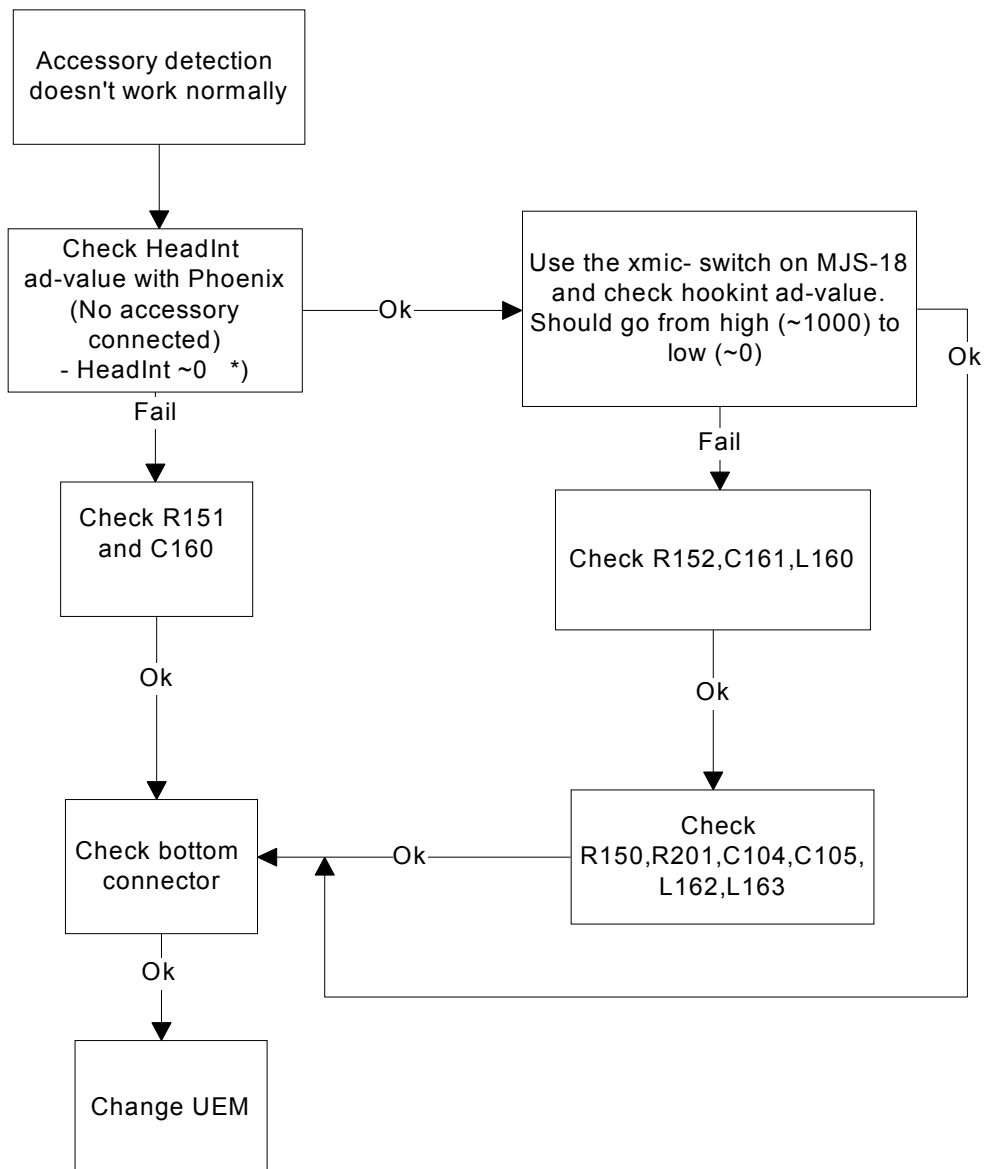
Figure 6: Fault tree, microphone fail



**Accessory detection**

- 1 Start the phone in the normal mode when checking for accessory detection.
- 2 The Ad- converter value of the hookint-line can be checked with the Xmic-switch on an MJS-18 test jig. Changes normally from high to low when no accessory is connected.
- 3 When the headset HDC-5 is connected, the hookint- value should be between 600 and 800.

Figure 7: Fault tree, accessory detection



\* On local or test mode  
 Headint <400

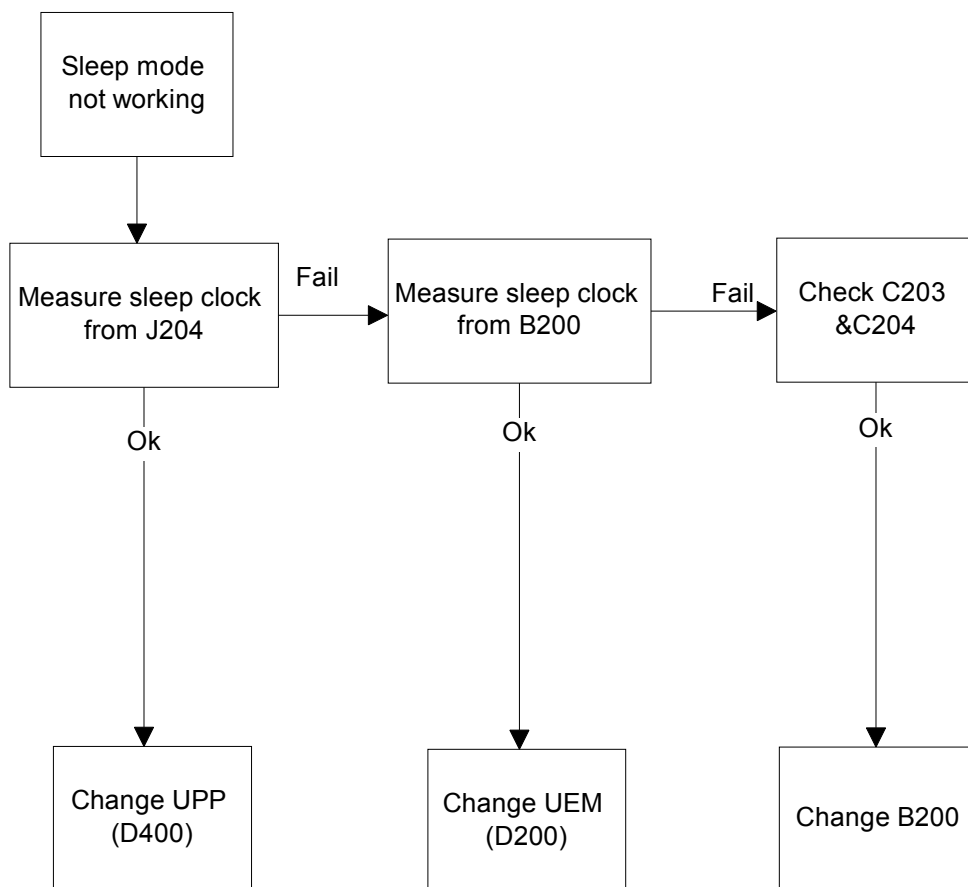
### Sleep Clock

Missing/non-functional sleep clock causes

- entering sleep mode fails (higher current consumption -> shorter standby time).  
The
- Baseband self tests cannot be run.
- Phone clock (on display) does not function properly.

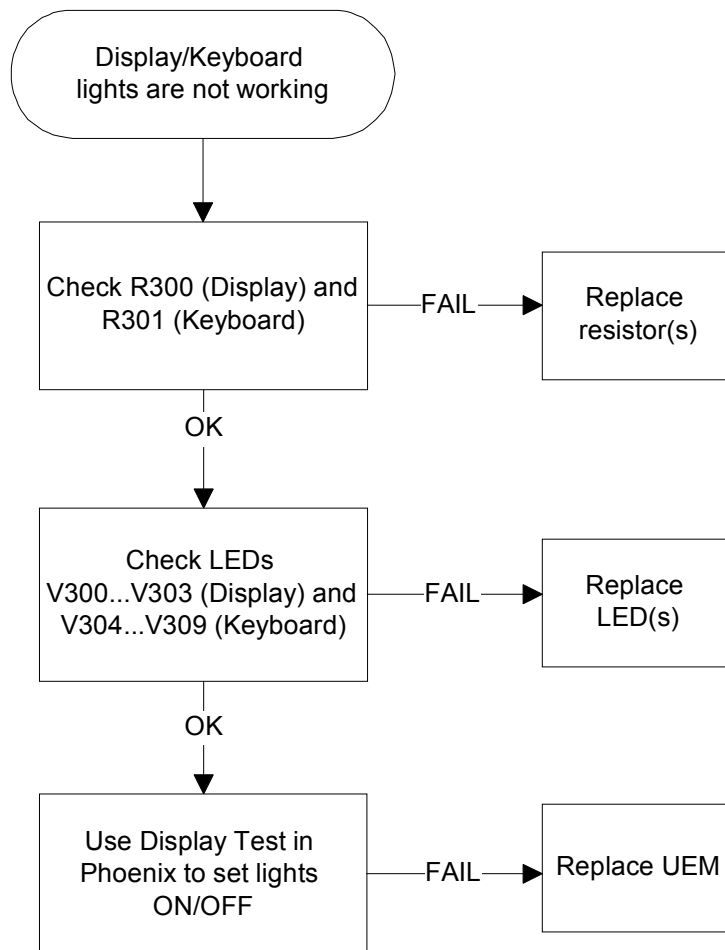


Figure 8: Fault tree, sleep clock



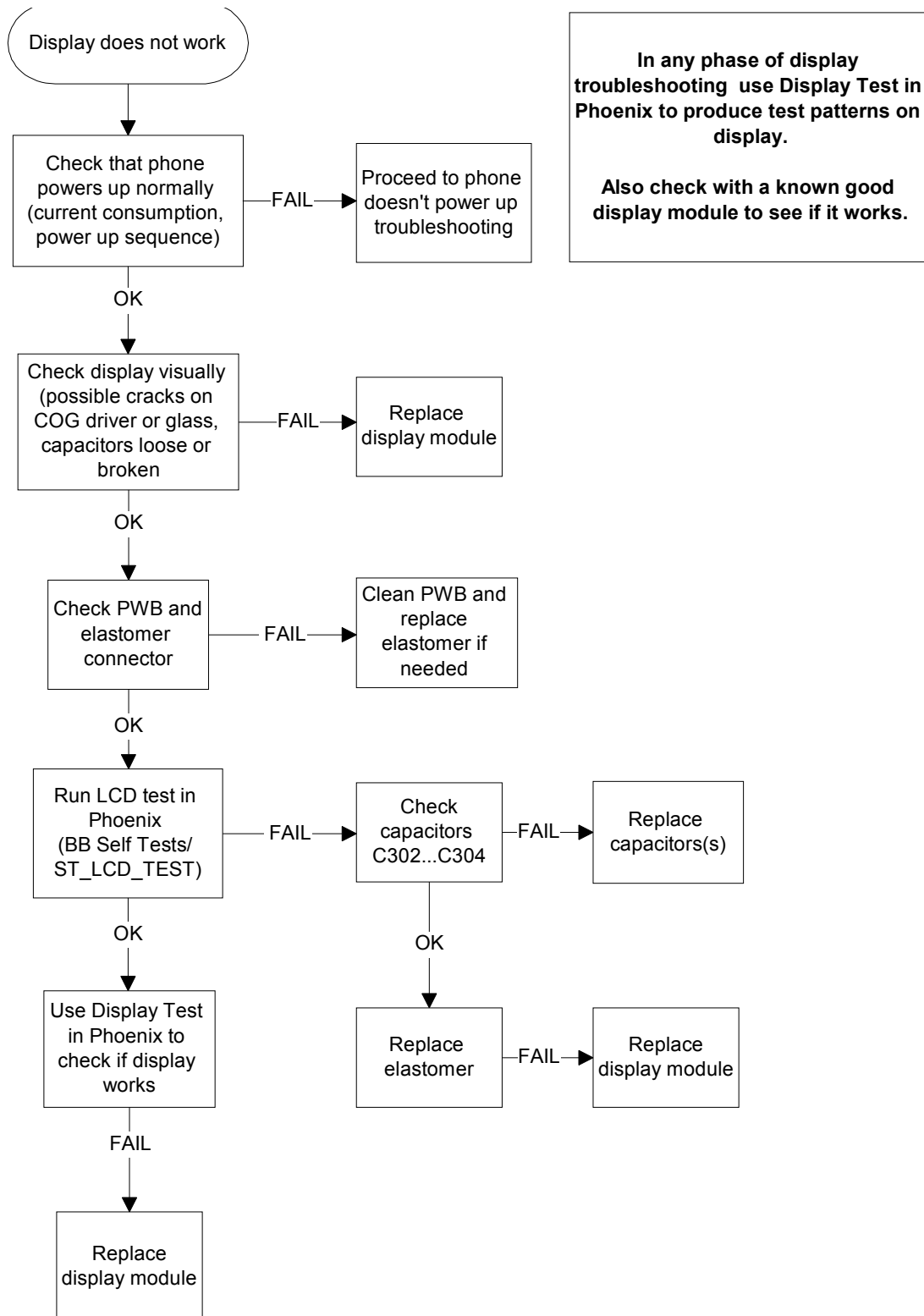
**Display/Keyboard lights do not work**

Figure 9: Fault tree, Display/Keyboard lights.



Display does not work

Figure 10: Fault tree, Display does not work



### **Buzzer does not work**

Check spring connectors and C306.

- No sound: Try using a known good buzzer instead. If there is still no sound, change the UEM (D200)
- Weak sound: Use the Audio test in Phoenix to set the buzzer parameters (frequency, strength). If it does not effect the sound level, change the buzzer.

### **Keyboard does not work**

Check that there is no dirt between the dome sheet and the PWB. Check EMI/ESD filter Z301 that all lines come through. If not, change Z301. If the keyboard still does not operate normally, try to use the Keyboard test in Phoenix to see if the pressed key is identified. If it is not identified, change the UPP(D400).

## Receiver Troubleshooting

### General instructions for RX troubleshooting

Start the Phoenix-software and use it to start the required RX-mode of the mobile phone. The troubleshooting flowchart is divided into three steps: (1) general checking, (2) local checking and (3) RX- chain checking.

*Note: Before changing ASICs or Filters, all solderings and missing components must be checked visually. After any possible component changes, the phone must be tuned with the Phoenix autotune SW.*

### Path of the received signal

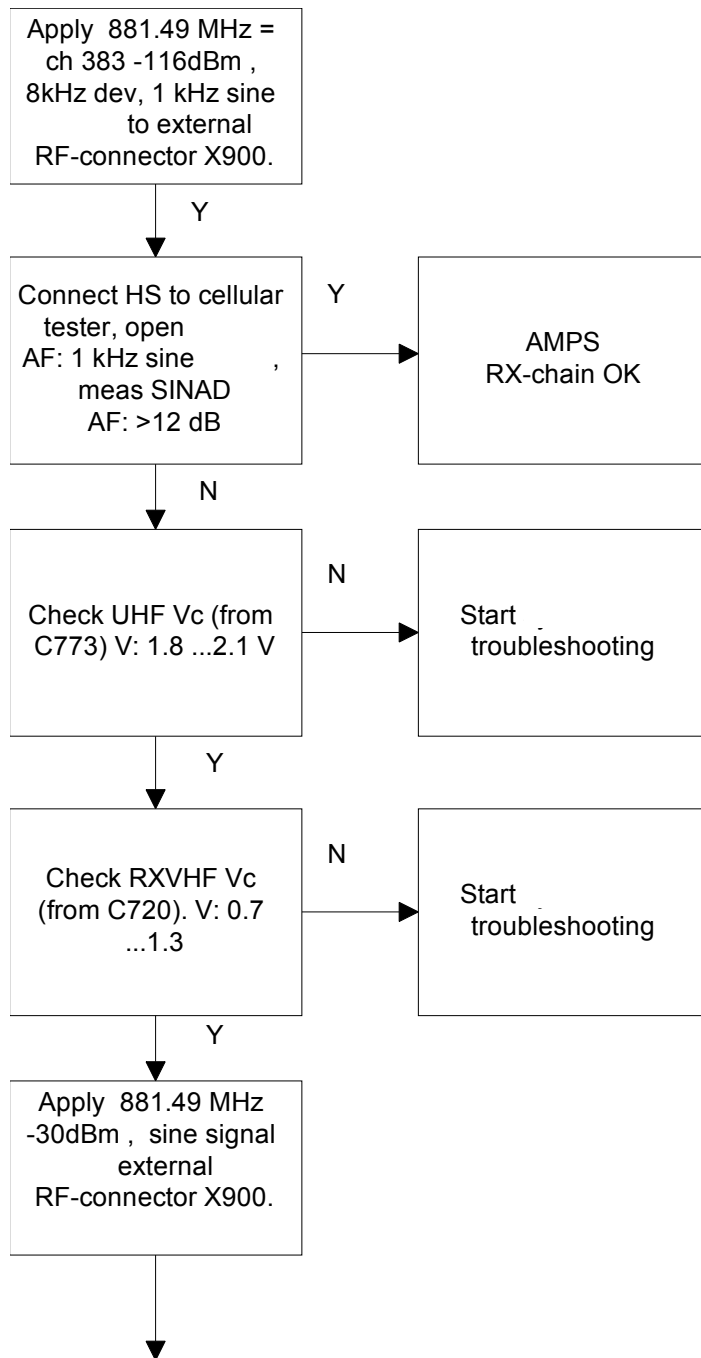
Block level description of the receiver:

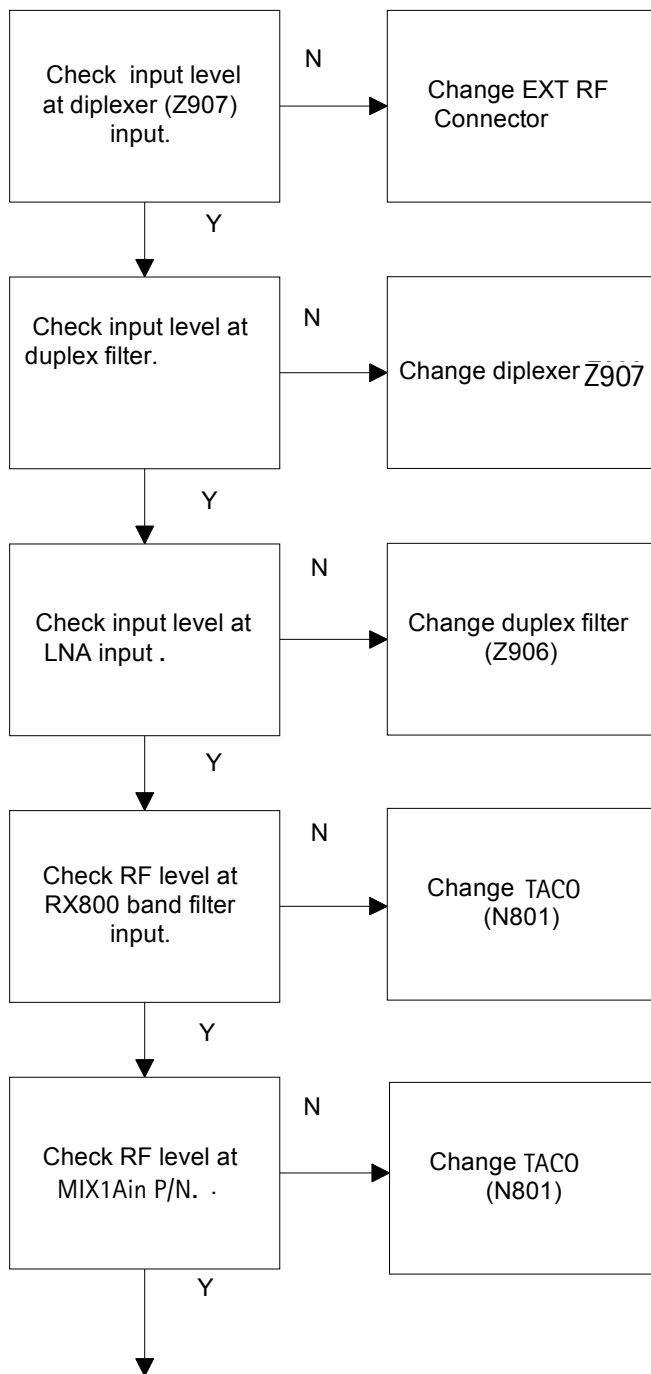
(Antenna/ext RF) – Diplexer – Duplexer – Low Noise Amplifier (LNA) – RX band filter – First mixer – 135.54 MHz RX IF filter – IF-amplifier – second mixer – 14 kHz low-pass filter – adjustable IQ amplifier – Baseband.

### Fault finding charts for receiver chain

AMPS

Figure 11: Fault tree. AMPS





Note!

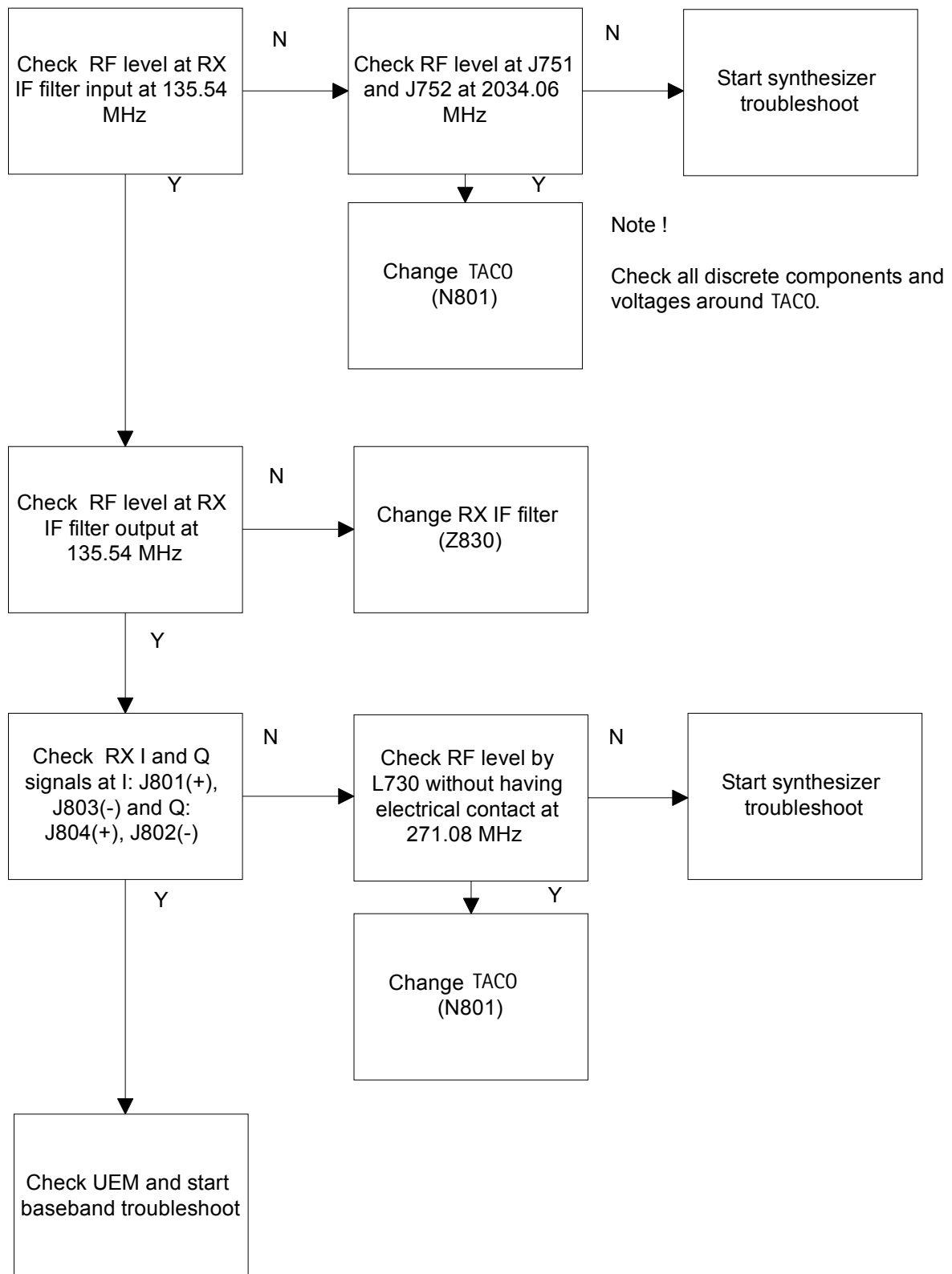
Check all soldering and components in antenna circuit before changing

Note!

Check all soldering and discrete components of frontend.

Note!

Check all solderings and discrete components around TACO before changing





### TDMA800

Since the same physical signal path is used for both analog and digital modes at the lower band, there is no need for additional troubleshooting in the digital mode. So if the digital mode at the lower band is not working properly, start the analog mode troubleshooting.

## Transmitter Troubleshooting

### General instructions for TX troubleshooting

Always use an RF-cable connected from an external RF-connector to the analyzer via (rf-power) attenuator. This is important to protect the analyzer against excessive RF-power and not to allow leakage of undesired RF-power into the cellular frequencies.

- 1 Start the Phoenix-software and select the TX mode under *Testing* (AMPS, DAMPS).
- 2 It is useful to select the mid channel (383 for AMPS/DAMPS) and the power level 2.

*Note: After any component change, tune the phone with the Phoenix autotune SW.*

### Path of the transmitted signal

#### AMPS/DAMPS

UEM TX I/Q DA-converters -> I/Q modulator and Digital gain step amplifier (TACO) -> IF-BPF -> Upconverter+driver (TACO) -> Balun->BPF -> PA -> Coupler (Power detector) -> Duplex-filter -> Diplexer -> EXT RF-connector -> Antenna

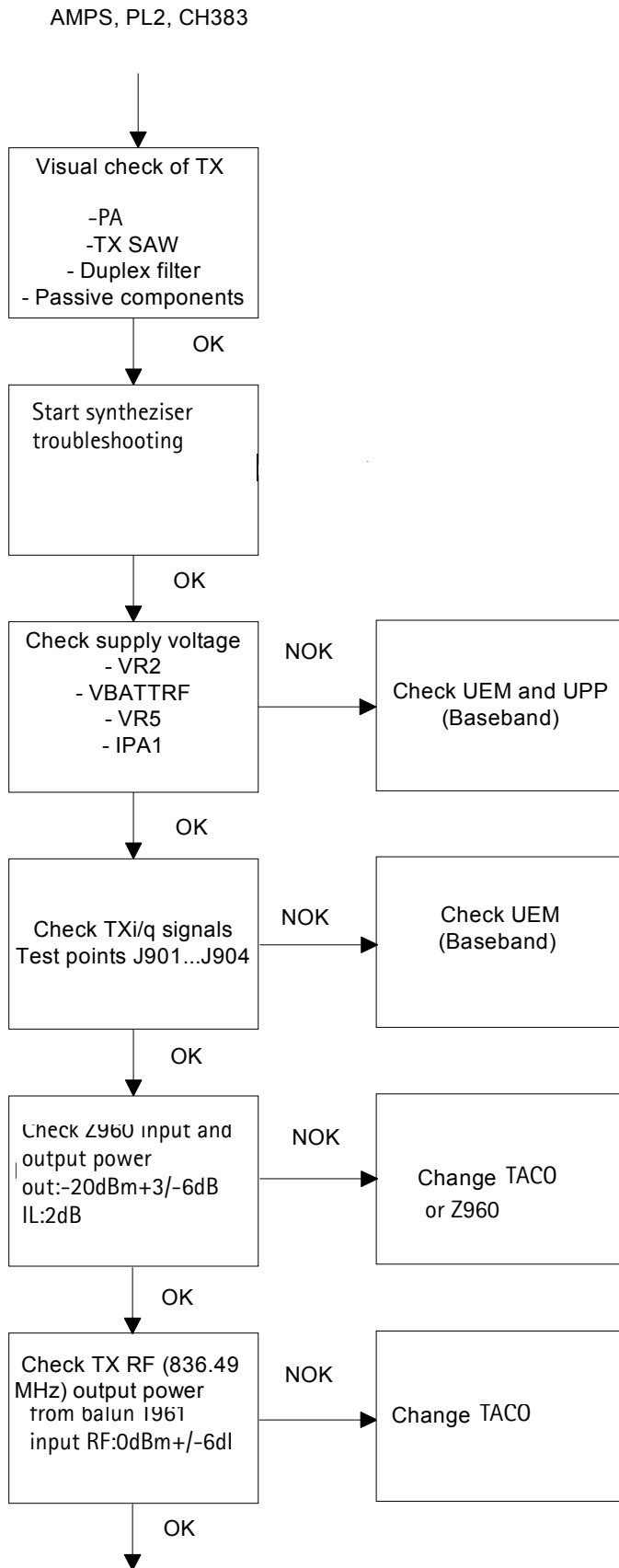
### Fault finding charts for the transmitter

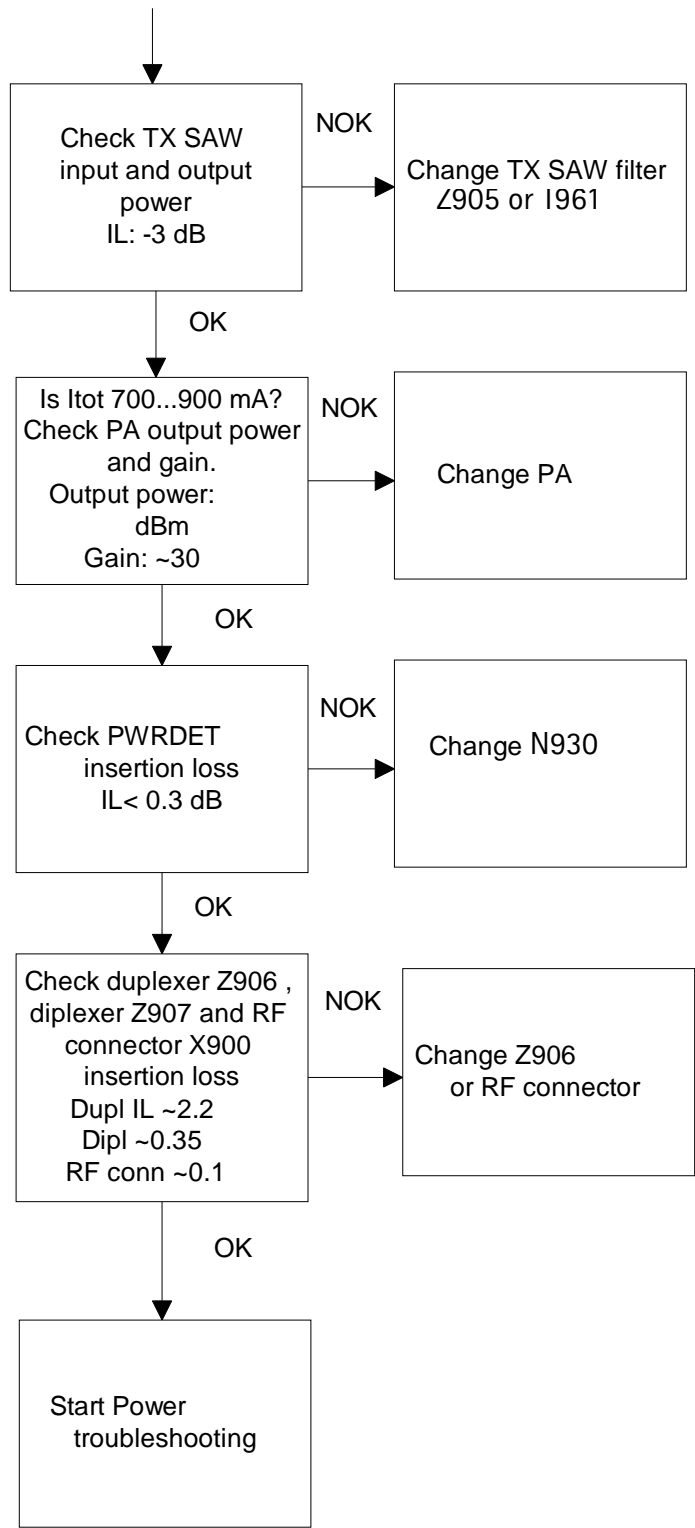
#### AMPS

- 1 Start the Phoenix-software and set the phone to the Analog mode by using RF Test UI.
- 2 Set the channel to 383 and the power level to 2.
- 3 Connect the RF-cable to the Ext RF connector.
- 4 Connect the cable to the Spectrum analyzer input.
- 5 Measure the RF level.

*Note: Insertion loss of the cable and attenuations.*

Figure 12: Fault tree. Transmitter troubleshooting





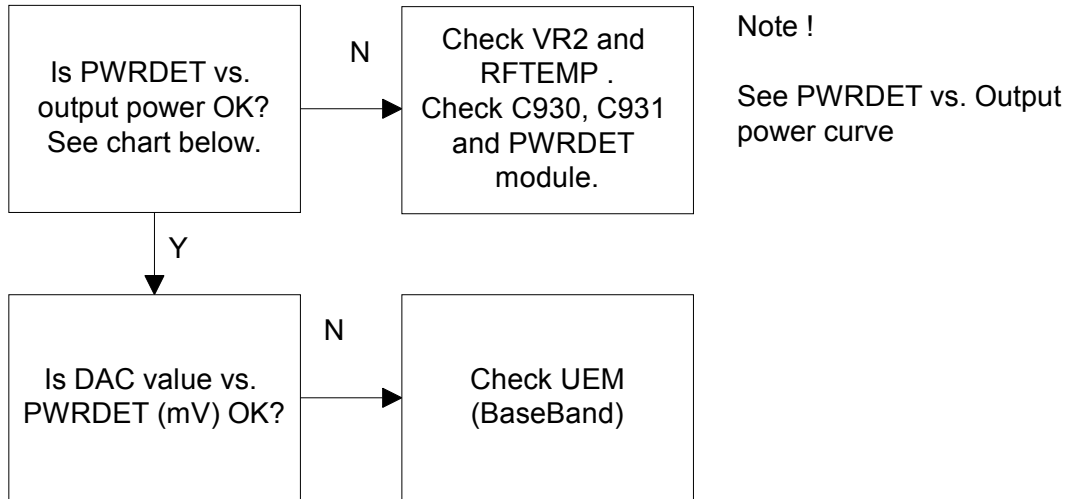
*TDMA800*

The transmitter chain is exactly the same as the AMPS-mode, except for the IPA current, and thus it is important that the AMPS have no faults.

*Power control loop*

Basically, the power detection is done with the Power detector module and power control is done inside the TACO. Power detection is basically similar for both bands, except that both bands have their own coupler.

Figure 13: Fault tree: Power control loop



The detected voltages are illustrated in the following table and diagram:

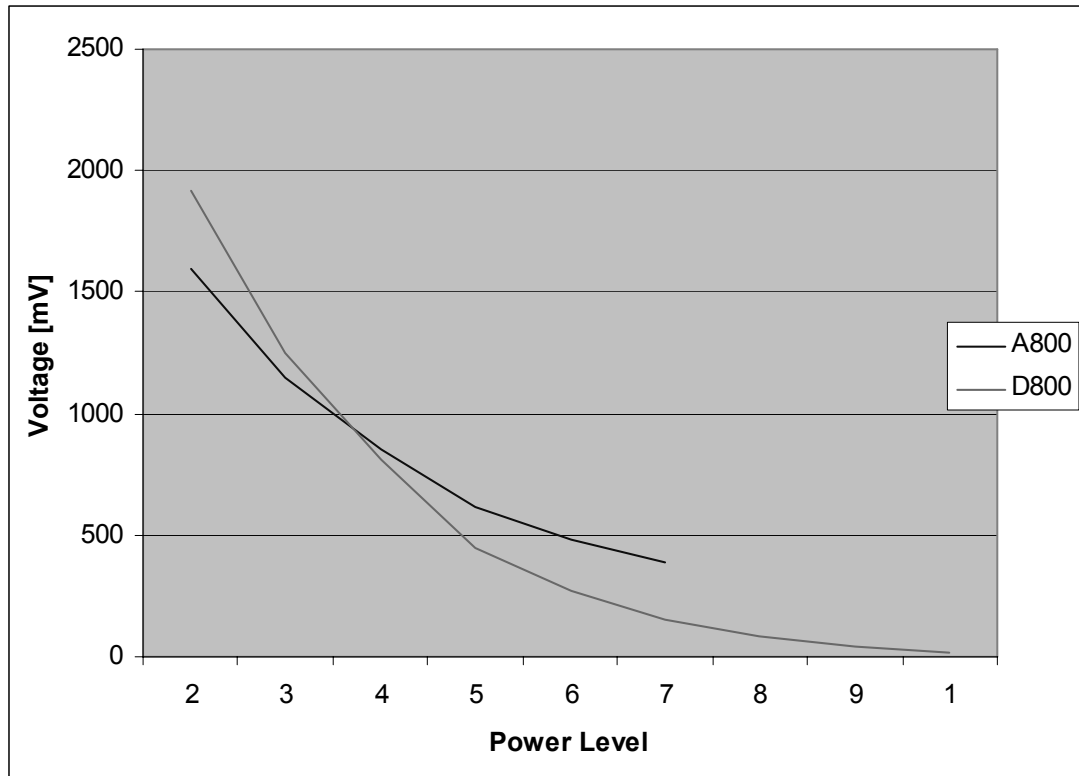
Table 3: Typical detected voltages at power levels PL2...PL10 (DB) for single bander

800A			800D			
	Pout	TXPWRDET		Pout	TXPWRDET	
PL	dBm	dac	mV	dBm	dac	Mv
2	24.5	577	1600	27.3	772	1919
3	21.0	413	1145	23.3	504	1250
4	17.5	308	851	19.3	358	815
5	13.5	222	615	15.3	251	448
6	9.5	172	478	11.3	192	271
7	5.5	142	387	7.3	150	152
8	-	-	-	3.3	125	81
9	-	-	-	-0.7	110	43
S0	-	-	-	-4.7	102	20

Note: DAC values may vary about +/- 20%

Note: TXPWRDET is the difference between TX on burst and off burst.

Figure 14: Detected voltage limits



### Synthesizer Troubleshooting

There are four oscillators generating the needed frequencies for RF-section. 19.44 MHz VCTCXO is used as a reference signal oscillatorreference oscillator, 2GHz UHF VCO with loop filter circuit is used for RX and TX channel selection, TX VHF and RF VHF are for TX modulator and 2nd RX mixer locals generation.

The VHF synthesizers are integrated in TACO, but have external VCO coils and loop filters. RX VHF frequency is fixed 271.08 MHz and TX VHF is fixed to 271.08 MHz . All locals are locked to stable 19.44MHz reference oscillator.

The frequency range for 2GHz UHF VCO is: 2009.1 ... 2125.53 MHz. The output frequency range for the lower band is from 2009.16 to 2059.02MHz. In upper band the output frequency range from the UHF VCO is from 2031.78MHz to 2125.53MHz.

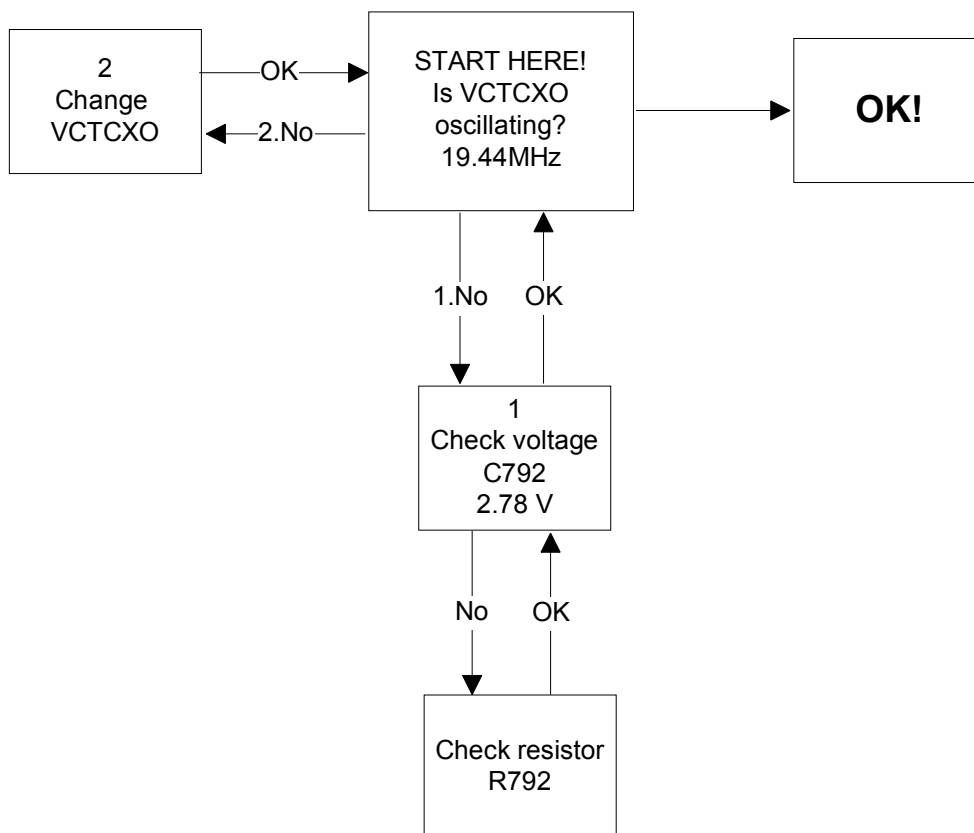
It is practical way to check out synthesizer status by measuring control voltage of the VCO from Integrator capacitor. If voltage is stable and reasonable, local oscillators are running correctly.

#### 19.44 MHz reference oscillator

The VCTCXO oscillator frequency (G790) is controlled by UEM. This output 19.44 MHz signal is connected to TACO. It is used as a reference signal in TACO and also fed out as buffered clock signal to UPP. All synthesizers use divided 19.44 MHz signal as a reference

signal for Phase locked loop to provide correct LO-frequency.

Figure 15: Fault tree: 19.44 MHz oscillator

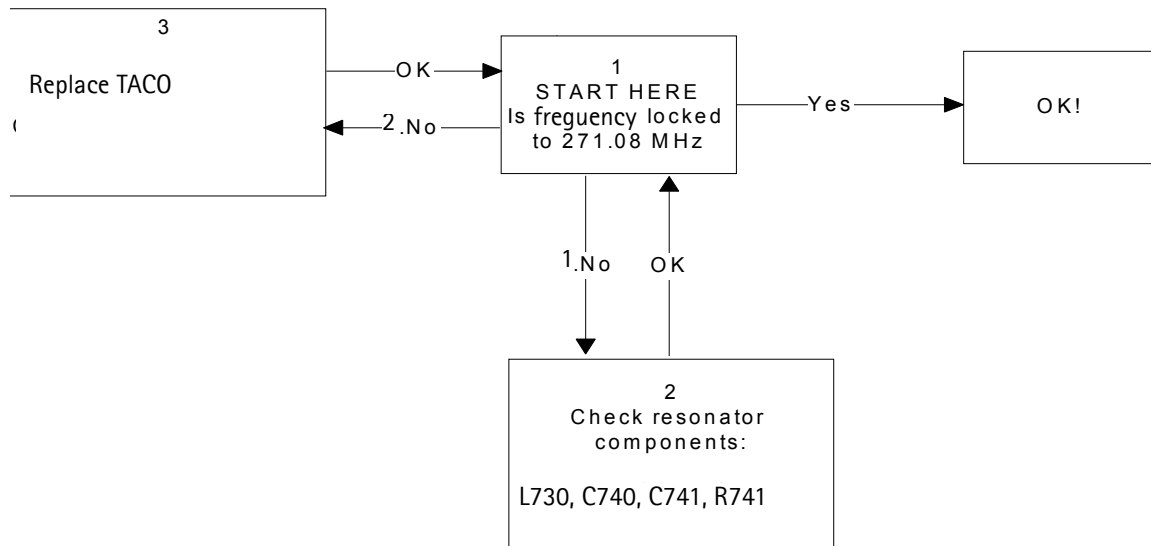


RX VHF

The RX VHF signal is used to generate receiver Intermediate frequency. RX VHF has one fixed frequency 271.08 MHz. Operating frequency is locked in Phase locked Loop.

RX VHF PLL output signal is integrated in TACO. There are only four external components, VCO coil L730 and loop filter components C740, C741 and R741. Fault finding chart for RX VHF VCO

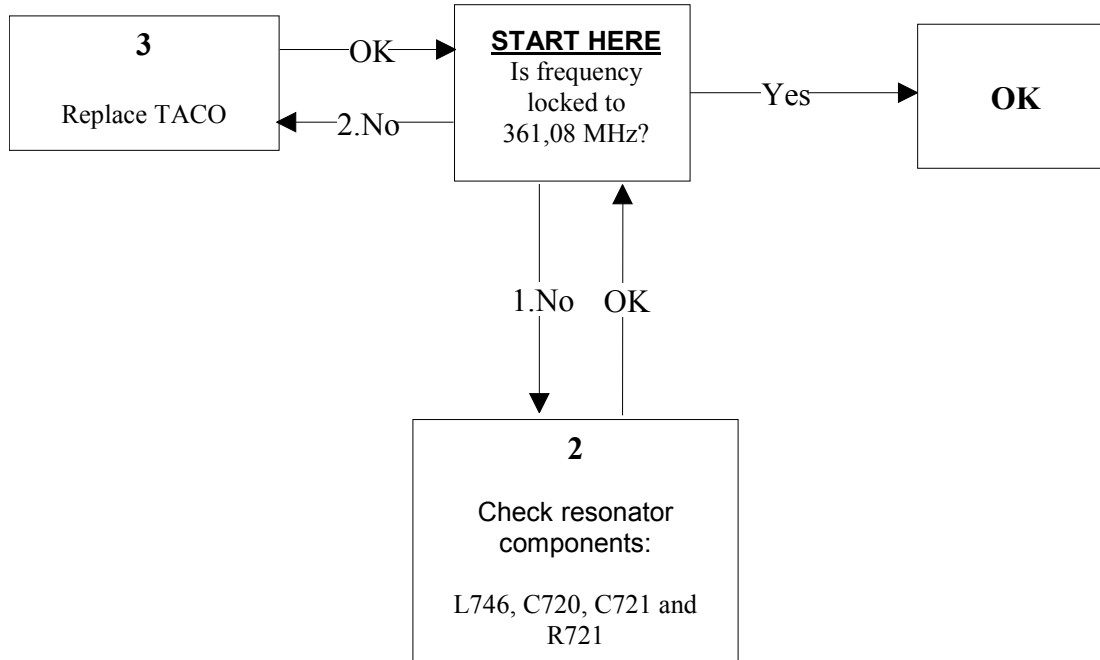
Figure 16: Fault tree: RX VHF



**TX VHF**

The TX VHF signal is used to generate transmitter Intermediate frequency. TX VHF VCO has one fixed frequency 361.08. Operating frequency is locked in Phase locked loop. TX VHF VCO output signal is divided by 2 and fed to the modulator.

Figure 17: Fault tree: TX VHF



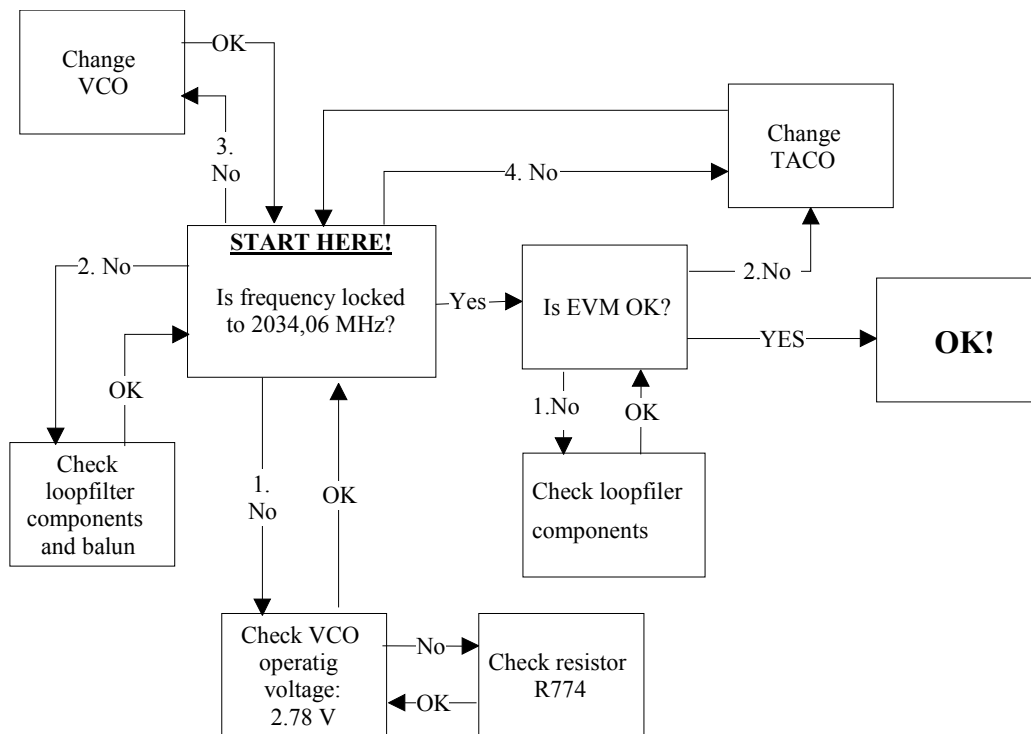


**UHF SYNTHESIZER**

The UHF VCO signal is used for RF channel selection. This signal is fed as a local signal for 1st mixer of RX-path and for upconverter of TX-path. When operating on lower band the VCO signal is divided by 2 before feeding. This synthesizer is used for channel selection in all modes and both bands.

The UHF synthesizer consists of an external 2GHz VCO module with loop filter components and integrated PLL parts in TACO. Integrated charge pump circuit allows analog and digital operation modes. The VCO Oscillation frequency is from 2009.1 to 2125.53 MHz. The output frequency of the VCO module depends on the DC-control voltage which is controlled by PLL-circuit inside TACO.

**Figure 18: Fault tree: UHF Synthesizer**



This page intentionally left blank.